

# Village of Elberta Recreation Plan

Village of Elberta, Benzie County, Michigan

2008-2013



*Let Our Resources Work For You.*



*Prepared by:*  
Northwest Michigan Council of Governments  
PO Box 506  
Traverse City MI 49685-0506  
231-929-5000  
[www.nwm.org](http://www.nwm.org)

**Village of Elberta  
Recreation Plan  
2008-2013**

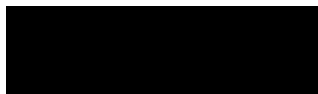
Village of Elberta  
Benzie County  
Michigan

Prepared for:

**Village Council:**

Douglas Holmes, President  
Sharyn Bower, Clerk  
Laura Manville, Treasurer  
David Bower  
Bonnie Ness  
Charles Hendershott  
Adam Burks  
Kenneth Holmes  
Reggie J. Manville

Prepared by:



PO Box 506  
Traverse City, MI 49685  
(231) 929-5000

**Table of Contents**

**Introduction..... 1**

**Community Description..... 2**

    Figure 2: Base Map ..... 3

    Figures 3 & 4: Topography ..... 4

    Figures 5 & 6: Population Density ..... 5

    Figure 7: Future Land Use Map ..... 6

    Figure 8: Zoning Map ..... 7

**Administrative Structure ..... 8**

**Recreation Inventory ..... 9**

    Public: ..... 9

    Private: ..... 11

    County Recreation: ..... 12

    Figure 10: County Recreation Map..... 14

**Description of the Planning and Public Input Process ..... 14**

**Goals, Objectives, and Action Program..... 15**

    Figure 11: Proposed Recreation ..... 17

**Appendix A: Detail Maps of Village Parks ..... 18**

**Appendix B: Public Input Documentation ..... 23**

**Appendix C: Approval Documentation ..... 33**

## **Introduction**

In 2007, the Village of Elberta Council engaged the Northwest Michigan Council of Governments to provide technical assistance towards the creation of a recreation plan addressing the recreation strategy of the Village from 2008 to 2013.

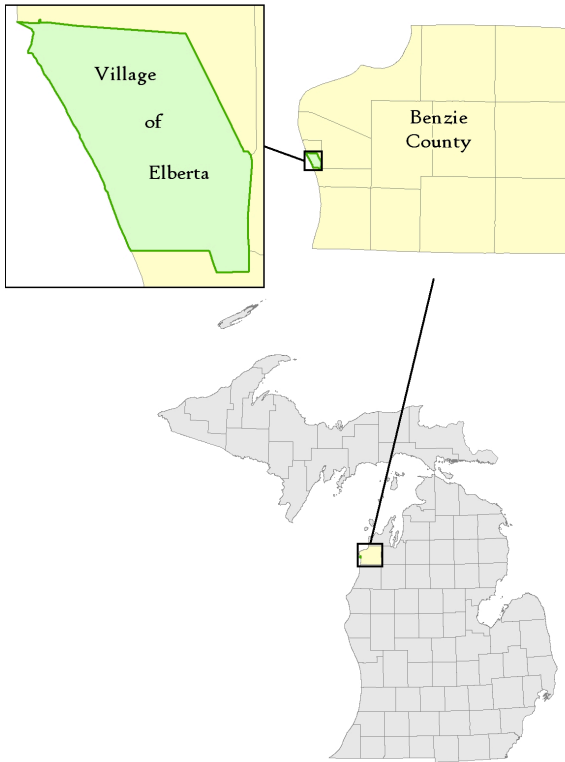
The following Recreation Plan provides a framework for utilizing the Village's resources for recreational purposes in order to effectively meet identified and anticipated needs. This plan identifies present and anticipated recreational needs and program projects to meet the future demands of residents and visitors alike. As a result, this plan will provide a comprehensive strategy for meeting those community recreation needs. The plan is intended to complement the Village's overall planning and development efforts.

The planning process undertaken for this plan incorporated the use of Village residents, trustees, and staff. The input guided in generating a future development plan for the Village's recreational facilities. Another element of this process is an assessment of the Village's local and area wide recreational resources. This includes an inventory of public and private recreational facilities. From this inventory, overall recreation goals and objectives for the Village are established.

The Village of Elberta's Recreation Plan concludes with an action program that suggests the direction and the activities that can be adopted for future recreational development and programming. This action program establishes program priorities, identifies financial requirements, and discusses the general administration of the overall program. This plan has been prepared to identify and propose a strategy for eliminating those deficiencies in the Village's recreation opportunities that can be accomplished within a five-year time frame. The plan has also been prepared to satisfy recreation planning requirements established under Michigan Department of Natural Resources (MDNR) guidelines.

## Community Description

Figure 1

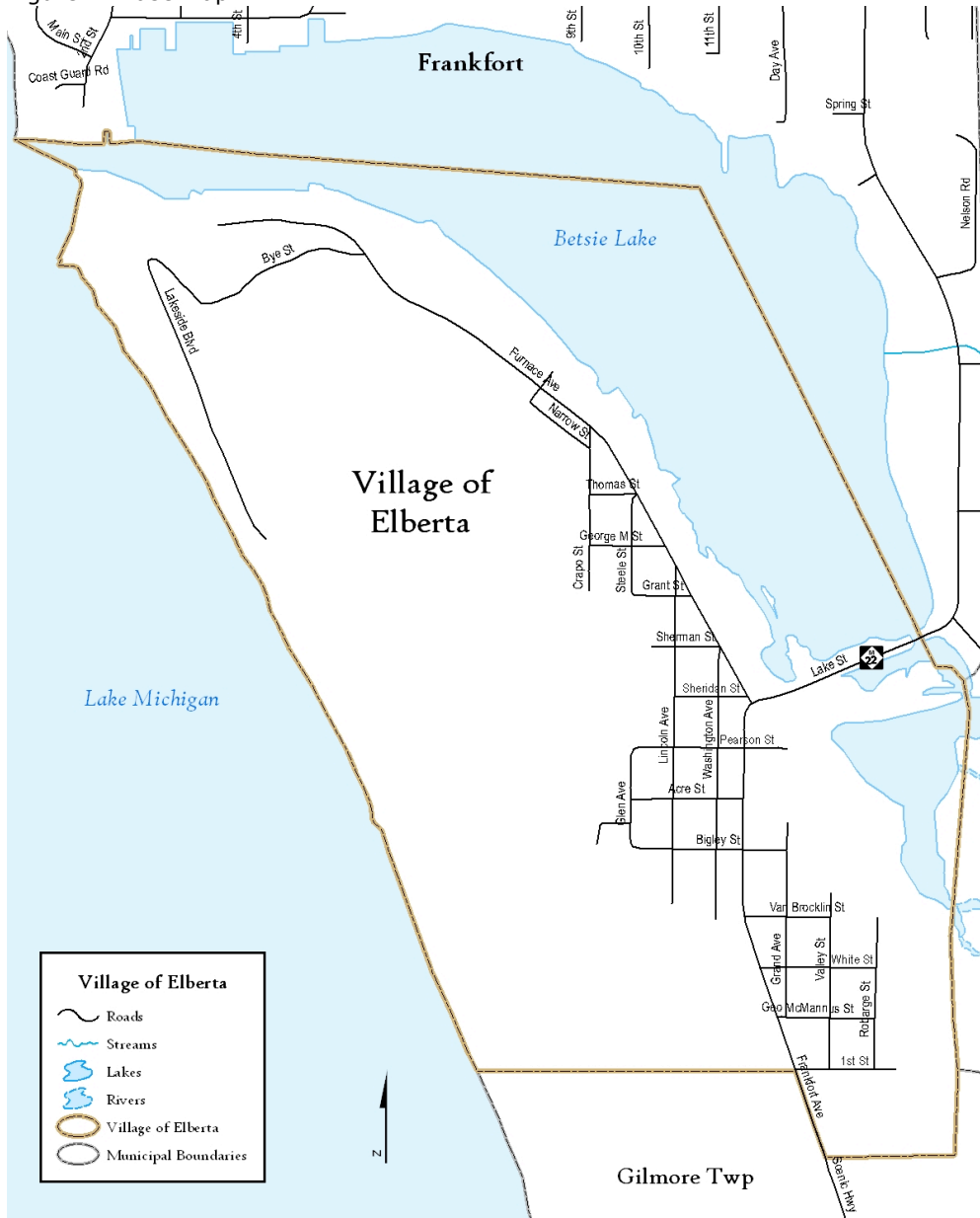


The Village of Elberta is a small village located at the western shore of Benzie County (Figure 1). The Village was first inhabited by settlers in the 1850s and soon became a center for the commercial shipping industry, specifically lumber. In 1866, the federal government constructed the first navigational channel in the area. This channel acted as the catalyst for future economic growth of the Village and the region. The channel served as the means for the development of saw mills, iron foundry, a Lake Michigan car ferry, and other port-based businesses until the early 1980s when the Ann Arbor Railroad ceased its operation.

Recreation and associated leisure activities have become a significant part of today's lifestyles. The type of activities preferred by a community's residents often reflects the

specific characteristics of the community. Such characteristics include a community's population growth rate, the age structure of the population, the social-economic composition of the population, land development patterns, available natural resources, climate, and geographical location. All of these characteristics can be correlated to a community's recreational preferences in one manner or another, describing the particular quality of existing recreational opportunities as well as identifying some of the factors that will influence recreational needs in the future. Figures 2 through 8 on the following pages show different characteristics of the Village and the surrounding community.

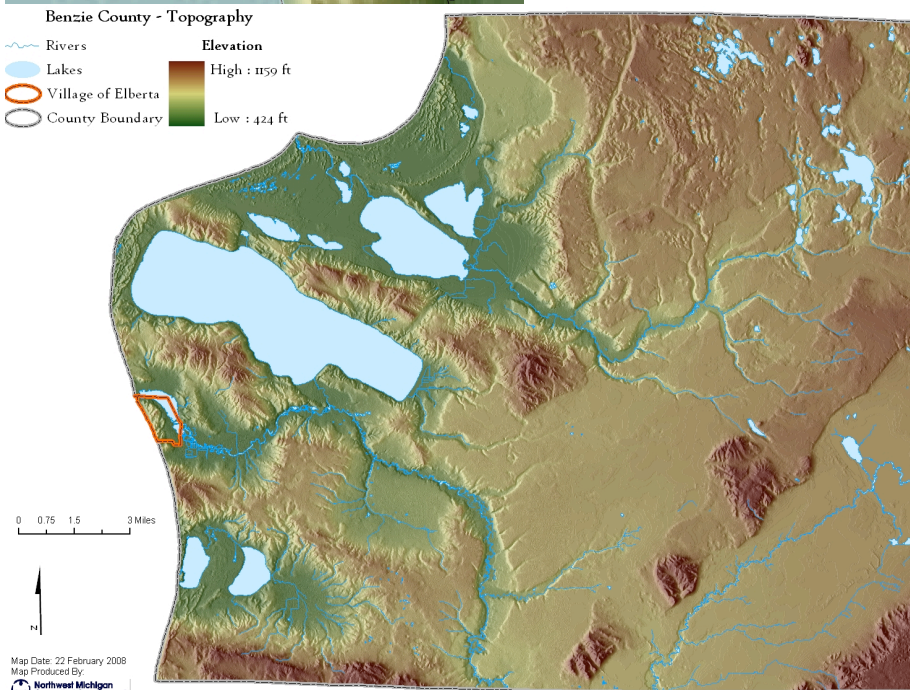
Figure 2: Base Map

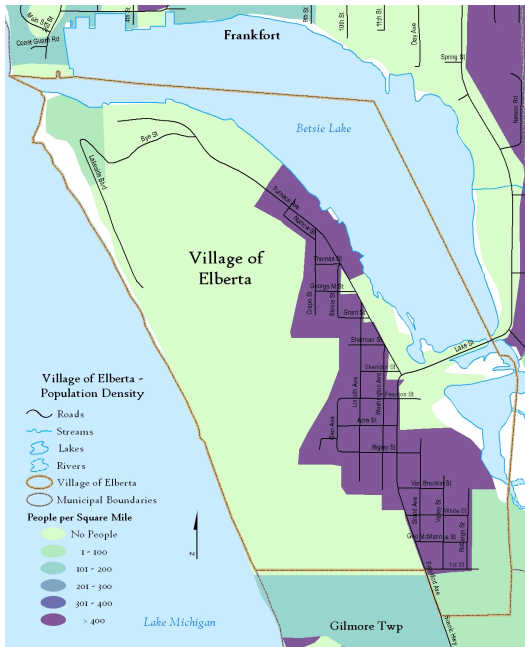




Figures 3 & 4: Topography

The maps on this page show the topography of the Village and the surrounding county. Within the Village boundaries the Elevation of the area ranges from about 580 feet to approximately 865 feet. Elevation in the surrounding county ranges from 424 feet to 1159 feet. Elevation data was acquired from the Michigan Center for Geographic Information's Data Library.





Figures 5 & 6: Population Density

The maps on this page show the population density (number of people per square mile) of the Village and the surrounding county. The data source for this information is the 2000 Census. It is shown to a block level. The Village Master Plan states that within the 0.7 square miles of land area available in the Village, 78.1% is vacant, 12.1 % is residential, and 9.8% commercial or industrial.

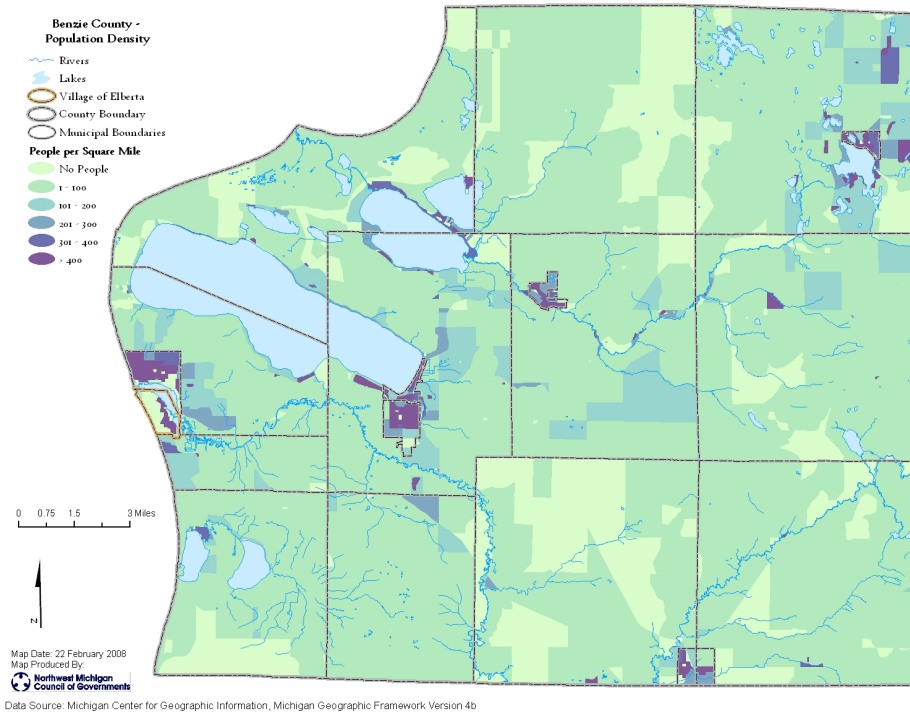


Figure 7: Future Land Use Map

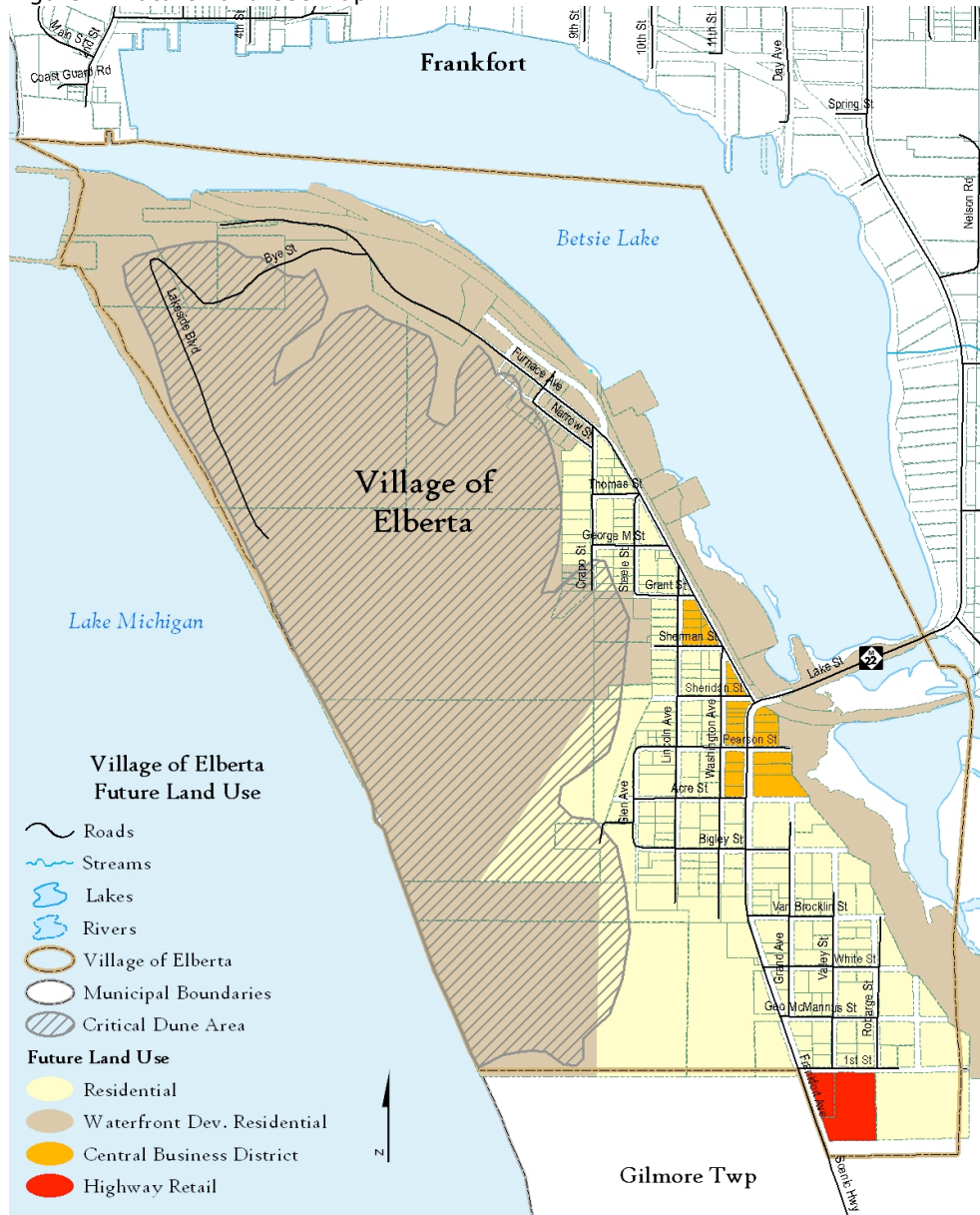
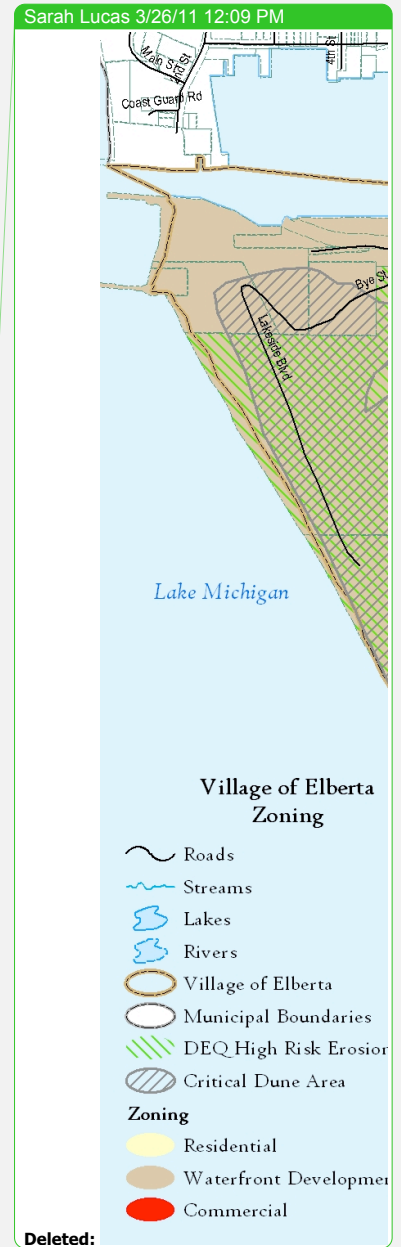
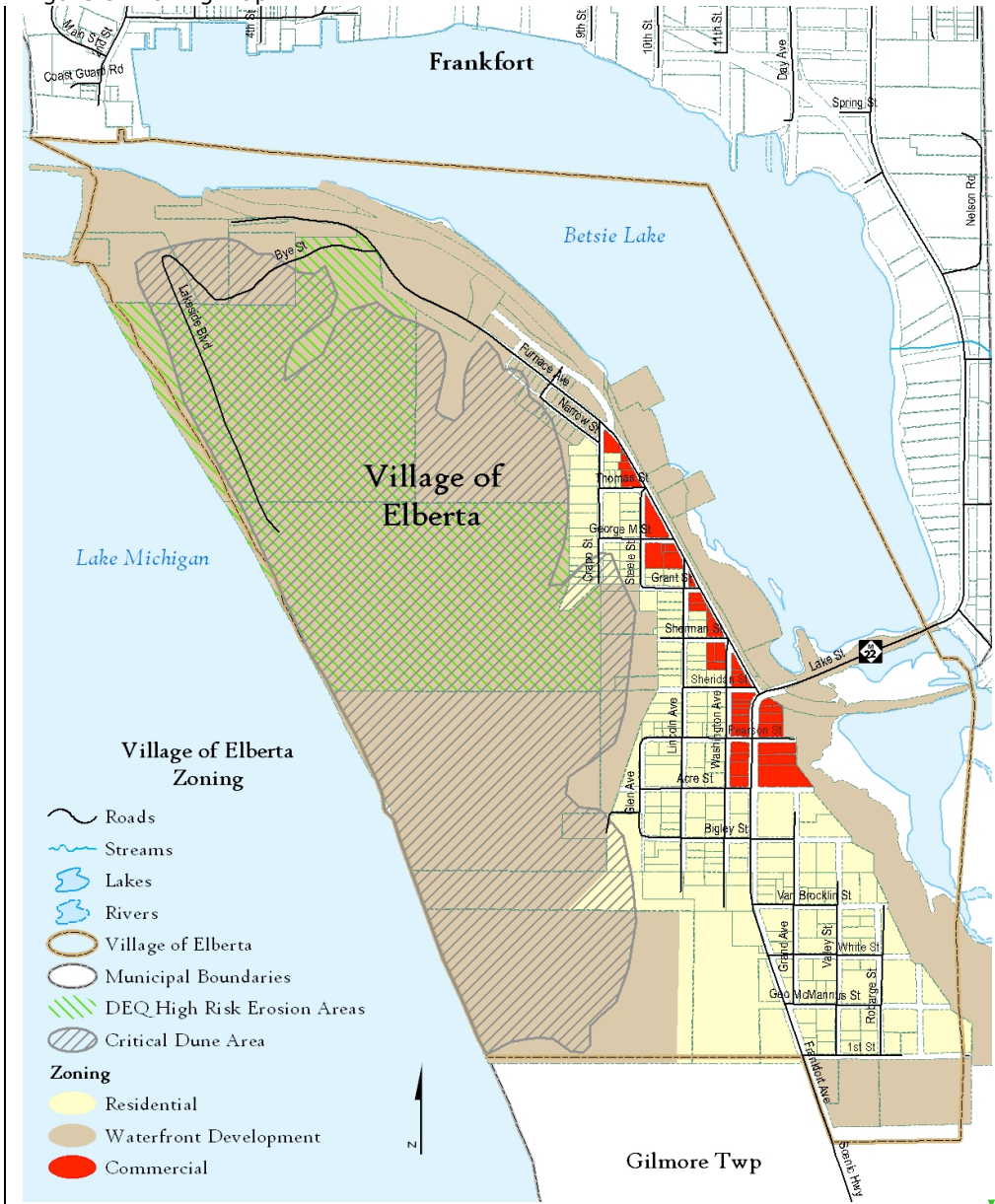


Figure 8: Zoning Map



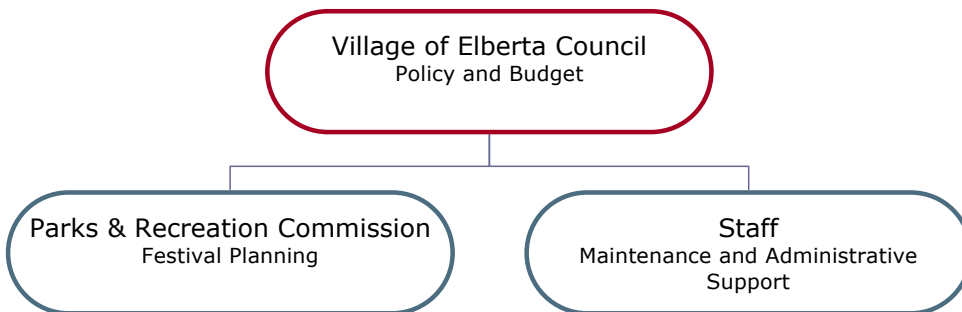
In Figures 7 and 8 the Critical Dune Area and High Risk Erosion Areas within the Village are shown. According to the Michigan Department of Environmental Quality (DEQ), Critical Dune areas protected by Part 353 represent the highest and most

spectacular dunes extending along much of Lake Michigan's shoreline and the shores of Lake Superior, totaling about 80,000 acres in size. The legislature has found that Critical Dune areas of the state are a unique, irreplaceable, and fragile resource that provide significant recreational, economic, scientific, geological, scenic, botanical, educational, agricultural, and ecological benefits to the people of Michigan. Local units of government should have the opportunity to exercise the primary role in protecting and managing critical dune areas in accordance with this part. The benefits derived from alteration, industrial, residential, commercial, agricultural, silvicultural, and the recreational use of critical dune areas shall occur only when the protection of the environment and the ecology of the critical dune areas for the benefit of the present and future generations is assured.

Also according to the DEQ, high risk erosion areas are those shorelands of the Great Lakes and connecting waters where recession of the zone of active erosion has been occurring at a long-term average rate of one foot or more per year. The erosion can be caused from one or several factors. High water levels, storms, wind, ground water seepage, surface water runoff, and frost are important factors causing erosion. The high risk erosion area regulations establish required setback distances to protect new structures from erosion for a period of 30 to 60 years, depending on the size, number of living units and type of construction. Other setback requirements are applicable for home restorations and additions to existing structures. Any person or local government agency proposing to erect, install, move, or enlarge a permanent structure on a parcel must obtain a permit prior to the commencement of construction.

**Administrative Structure**

Chart 1: Organizational Chart



The park and recreation functions in the Village of Elberta are overseen by the Village Council. The Village also has a Parks and Recreation Commission whose role has historically been limited to sponsoring events such as the annual Farmers Market. The Village employs two staff persons under their Major and Local Streets Fund who spend a portion of their time maintaining the parks within the Village limits. While there is no specific designated funding for parks & recreation within the Village budget some funding to maintain the parks comes out of the Village's

General Fund and revenue received for renting out park facilities and from the annual Farmer's Market. The projected annual revenue for 2008 is approximately \$19,000. Currently there are no programs set up that utilize volunteers and the Village does not have any relationships with school districts or other public agencies.

## Recreation Inventory

The Village of Elberta maintains a fair amount of parks and recreation services for a village of its size. The inventory of recreation within the Village was conducted via aerial photo interpretation and on-site visits. Figure 9 shows the location of recreation within the Village boundaries. Below is a listing of each park which includes the description and amenities available at each. The Accessibility Assessments were based upon criteria provided in the Michigan Department of Natural Resources' Guidelines for the Development of Community Park, Recreation, Open Space, and Greenways Plans.

Public:

1. *Elberta Historic Waterfront Park* – This Neighborhood Park is located on the shores of Betsie Bay and includes over 1,200 feet of scenic water frontage over 10 acres of land. This park's amenities provide for activities such as fishing, picnicking, and group gatherings that include: weddings, reunions, outdoor theater, and other gatherings. Development of this park was made possible through two grants awarded in 1998 and 1999. The first grant (TF98-033) titled Ann Arbor Railroad Park/Betsie Valley Trail Head Dev. provided funding that allowed for the development of elements such as: restroom/concession building, utilities (water & sewer), fishing deck, concrete amphitheater stairway, site lighting, park furnishings, and landscaping/plantings. The second award (TF99-014) titled Elberta Historic Waterfront Trailhead Park-Phase II provided funding for the development of elements such as: a picnic pavilion, performance pavilion, Betsie Valley Trail Paving, parking lot (54 spaces)/entry road, site lighting, viewing event deck, landscaping, and drinking fountain. All of the elements from both grants were built and are still in good condition. Accessibility Assessment = 5. Facilities include:
  - a. Covered Picnic Pavilion housing 12 or more picnic tables
  - b. Two parking lots including handicapped parking
  - c. Children's playground with bark bedding
  - d. Swing set with 8 swings
  - e. 1 Bicycle rack
  - f. Lighted paved paths/trails accessible to the handicapped
  - g. 10 Park benches
  - h. Outdoor amphitheater
  - i. Covered fishing deck
  - j. Life Saving Station which is available for rent to group gatherings
  - k. Restrooms (inside Life Saving Station building)

I. Drinking fountain

For a detailed map of this park please see Appendix A.

2. *Elberta Lake Michigan Beach* – This Community Park is located on beautiful Lake Michigan and includes just over one mile of public beach access. Along with beach access this park is often used for fishing. Accessibility Assessment = 1. Facilities include:
- a. Primitive restrooms
  - b. Handicapped accessible pier
  - c. Scenic Overlook parking
  - d. Handicapped parking at beach access
  - e. Boardwalk

For a detailed map of this park please see Appendix A.

3. *Dudley Penfold Memorial Park (aliases: Mini-pond/Pavilion Park/Elberta Marina)* – This 4 acre Neighborhood Park is located in the heart of Elberta on Betsie Bay and is directly accessible from M-22. Accessibility Assessment = 1. Facilities include:
- a. Covered picnic pavilion
  - b. 12 picnic tables
  - c. 3 grills
  - d. Wooden playground train surrounded by play sand
  - e. Boat Launch suitable for shallow boats such as kayaks and canoes
  - f. Pedestrian bridge
  - g. Access to the Betsie Valley Trail
  - h. Trail head parking
  - i. 34 boat slips

For a detailed map of this park please see Appendix A.

4. *The Community Building* – This Neighborhood Park sits on 7 acres of land at the south end of the Village which was originally part of the local school property. The property was split and the side with the school was sold. The remaining portion is used for sports and a public meeting room. Accessibility Assessment = 2. Facilities include:
- a. The Community Building
  - b. Restrooms
  - c. Baseball field
  - d. Bleachers
  - e. Swing set
  - f. Teeter-totter
  - g. Monkey bars
  - h. Spring horse
  - i. 2 Tetherball polls

5. *Tot Park* – This ¼ acre Mini-park is located within the residential area of the Village. It serves as a local playground for Village residents. Accessibility Assessment = 1. Facilities include:
    - a. Sandbox
    - b. Swing set
    - c. Slide
    - d. Teeter-totter
    - e. 2 Spring horses
    - f. Merry-go-round
    - g. 1 Picnic table
    - h. Park bench
    - i. Fencing on three sides
  6. *Veterans Park* – This ½ acre Mini-park is maintained as open space within the residential area of the Village. There are no amenities or facilities to speak of in relation to recreation. Accessibility Assessment = 1.
  7. *Anderson Park* – This ½ acre Mini-park located within the residential area of the Village and is used as a playground. Accessibility Assessment = 1. Facilities include:
    - a. Slide
    - b. Teeter-totter
    - c. 2 Spring horses
    - d. Basketball court with two hoops
    - e. 1 Park bench
    - f. Sandbox
    - g. Fencing on all sides
  8. *Betsie Valley Trail* – This Trail Park extends approximately 23.5 miles throughout Benzie County. It briefly extends into the Village of Elberta for a ½ mile. This trail is widely used for both hiking and biking. It serves as a connection between different communities and parks within Benzie County.
- Private:  
(For a detailed map of the marinas please see Appendix A)
9. *Betsie Bay Marina* – This privately owned marina is located on Betsie Bay and includes 56 slips; a boat launch; refueling station; and a storage/maintenance shed.
  10. *Betsie Shore's Dockominiums* – This private marina is located on Betsie Bay. The Village of Elberta owns 33 out of the 42 slips available.
  11. *North Star Marina* – This privately owned marina is also located on Betsie Bay and includes 24 boat slips.

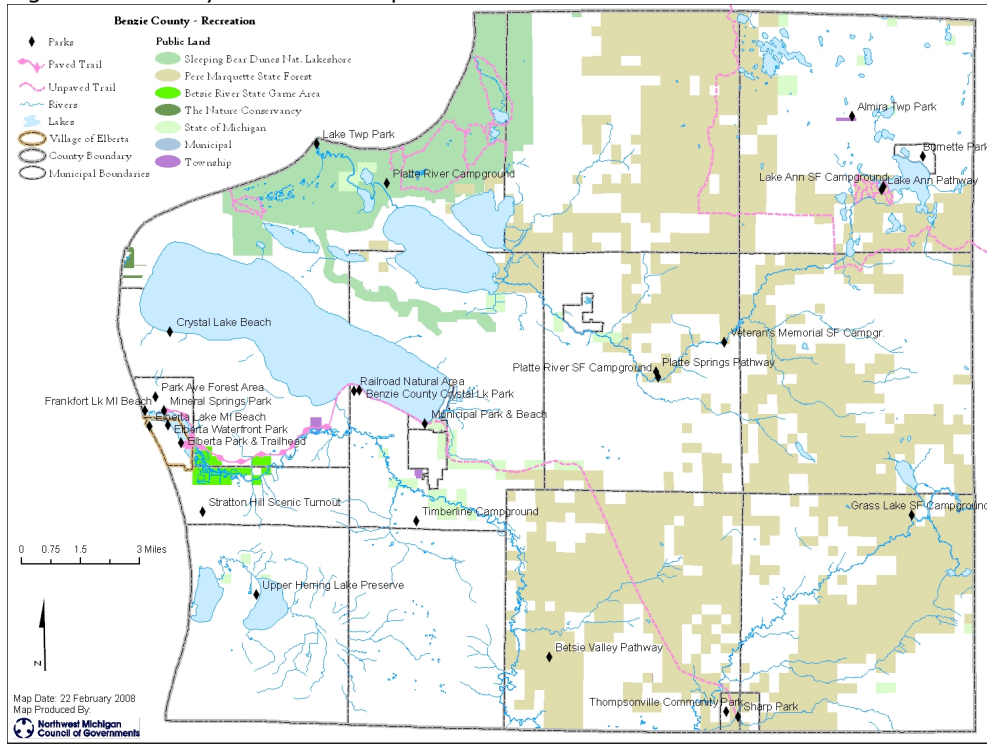
County Recreation:

Recreation outside of the Village Boundaries is abundant in Benzie County. Figure 10 shows the Village's proximity to many state and federal lands including: Sleeping Bear Dunes National Lakeshore; Pere Marquette State Forest; Betsie River State Game Area; The Nature Conservancy lands; and other State of Michigan Lands. Proposed recreation throughout Benzie County was identified through public input sessions for the Northwest Michigan Regional Non-Motorized Strategy. The resulting maps can be viewed online at: <http://www.nwm.org/nonmotorizedstra.asp>. Though completing the Beach-to-Beach Trail in the Village of Elberta was identified as a proposed route it was not selected as a priority. At the time of this publication the maps and plan from the Northwest Michigan Regional Non-Motorized Strategy are still under public review.

Figure 9: Village Recreation Map



Figure 10: County Recreation Map



**Description of the Planning and Public Input Process**

A public input workshop was held February 13, 2008 in the Village of Elberta at the local community building. This workshop offered residents and other members of the public to come share their interests about recreation within the Village. Notification of this workshop was placed in the local paper (Benzie County Record Patriot) and notices were put up in the Village offices, the post office, and the library a couple of weeks prior to the workshop date. At the workshop large maps showing current recreation were available for viewing and drawing proposed recreation on. Questionnaires were given to the workshop attendants that asked them about their perspective of recreation in the Village. Ten people attended the workshop and offered their input about recreation. The results of the public input workshop can be seen summarized in Figure 11.

The draft plan became available to the public for viewing on March 5, 2008. A notice regarding when and where the draft plan would be available for viewing was put in the local paper (Benzie County Record Patriot) a week prior to March 5<sup>th</sup>. The notice was kept in the paper until April 9, 2008. Comments and questions

were received by the Northwest Michigan Council of Governments prior to the end of the day on April 9<sup>th</sup>. All comments received were considered and responded to. A Village Council meeting was held April 17, 2008 where the public was invited to come and comment on the recreation plan during a Public Meeting before it was presented for adoption to the Village Council. Notice of this meeting was placed in the local paper and posted at the village offices five weeks prior to the meeting date. The Elberta Village Council unanimously voted to adopt the recreation plan on April 17, 2008.

### **Goals, Objectives, and Action Program**

#### **Goal:**

The Village of Elberta seeks to provide its residents and visitors access to recreational opportunities that enhance the character and setting of the village.

#### **Objectives:**

(Figure 11 has the approximate locations of some of the listed objectives. Please note that the proposed trails are conceptual only with the idea of linking the endpoints, allowing the actual locations of the paths to be determined by topography of the land.)

- A. Acquiring Elberta Dunes property for a public natural area in cooperation with the Grand Traverse Regional Land Conservancy. The short term objective would be to acquire the southern portion of the Elberta Dunes. In the long term, an objective would be to purchase, when available, the remaining portions of the Elberta Dunes property which is privately held in order to create a continuous park system that links the Lake Michigan Beach, Elberta Dunes, and other Village recreation.

*Action Strategy:* (2008) In the short term apply for grant money from the Michigan Natural Resources Trust Fund so that the Village may purchase the southern portion of this privately owned property to preserve its natural features and keep it available to the public for passive recreation. (2009-2013) In the long term, find other ways to fund the purchase of the northern Elberta Dunes property to conserve the ecological and recreational values of the Entire Elberta Dunes system.

- B. Connect Elberta Lake Michigan Beach and the City of Frankfort's Lake Michigan Beach with a trail extension from the Betsie Valley Trail (Segment D). This includes improving the parking area on M-22 for the trailhead to provide better accessibility for the disabled and access to the Village downtown area.

*Action Strategy:* (2008-2010) Seek funding where available from grants and trail organizations that can match money

C. Improve parking to add handicapped accessibility and add picnic facilities and seasonal restrooms at the entrance to the Elberta Lake Michigan Beach for a short term objective. A long term objective would be to provide year round access to the beach by either creating a new entrance drive and/or extending the Beach-to-Beach Trail from the Historic Waterfront Park with the cooperation of property owners.

*Action Strategy:* (2008-2013) Reapply for Great Lakes Fishery funding and also seek other funding sources

D. Provide continued maintenance for existing parks in the Village Recreation System

*Action Strategy:* (2008-2013) Have the Parks & Recreation Commission develop a volunteer program to provide park maintenance and/or seek ways to contribute funding for maintenance.

Figure 11: Proposed Recreation



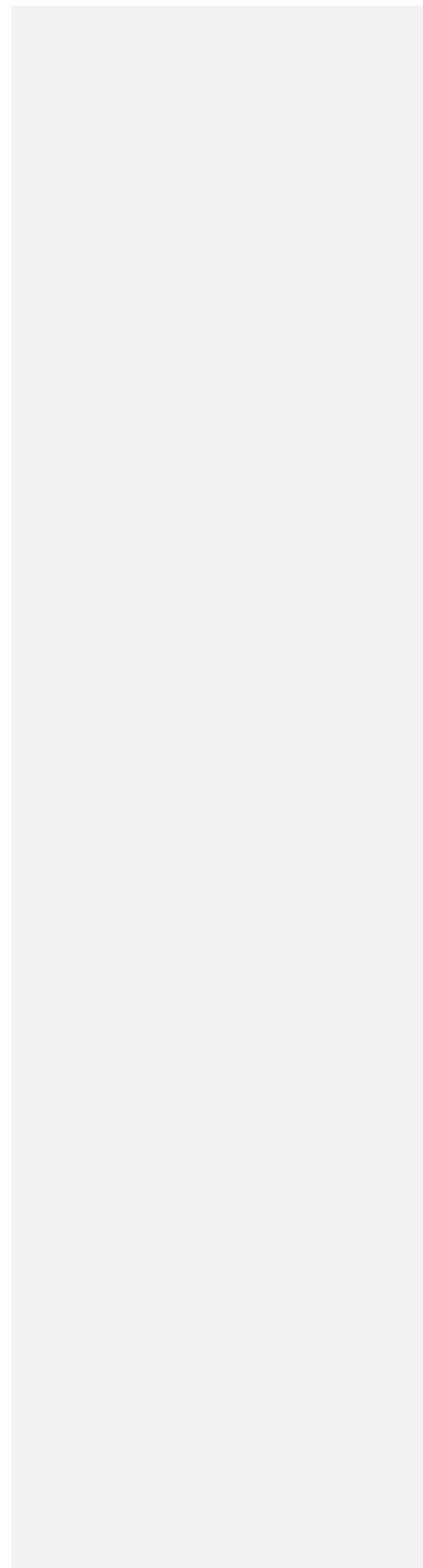
**Appendix A: Detail Maps of Village Parks**

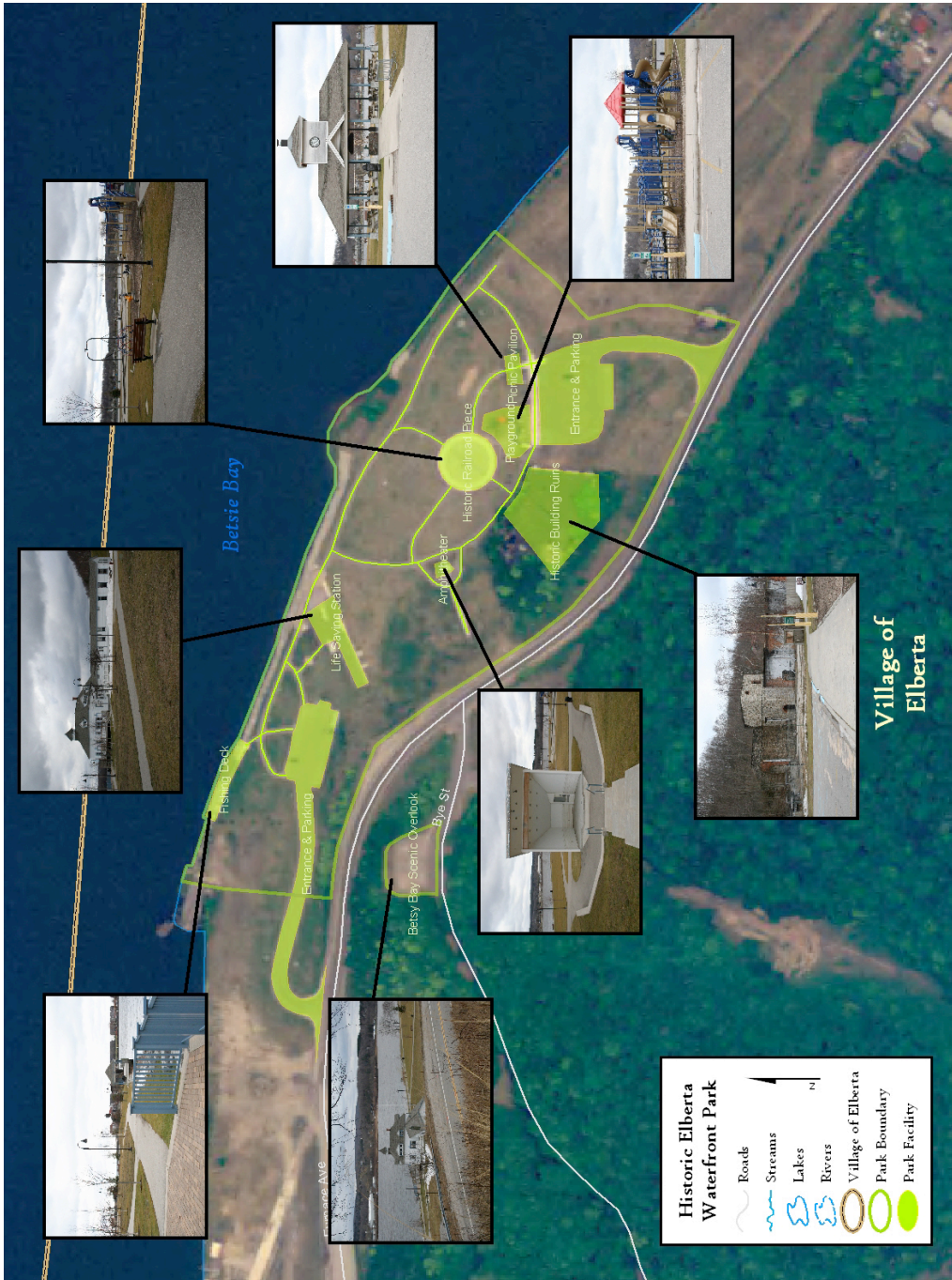
Elberta Historic Waterfront Park

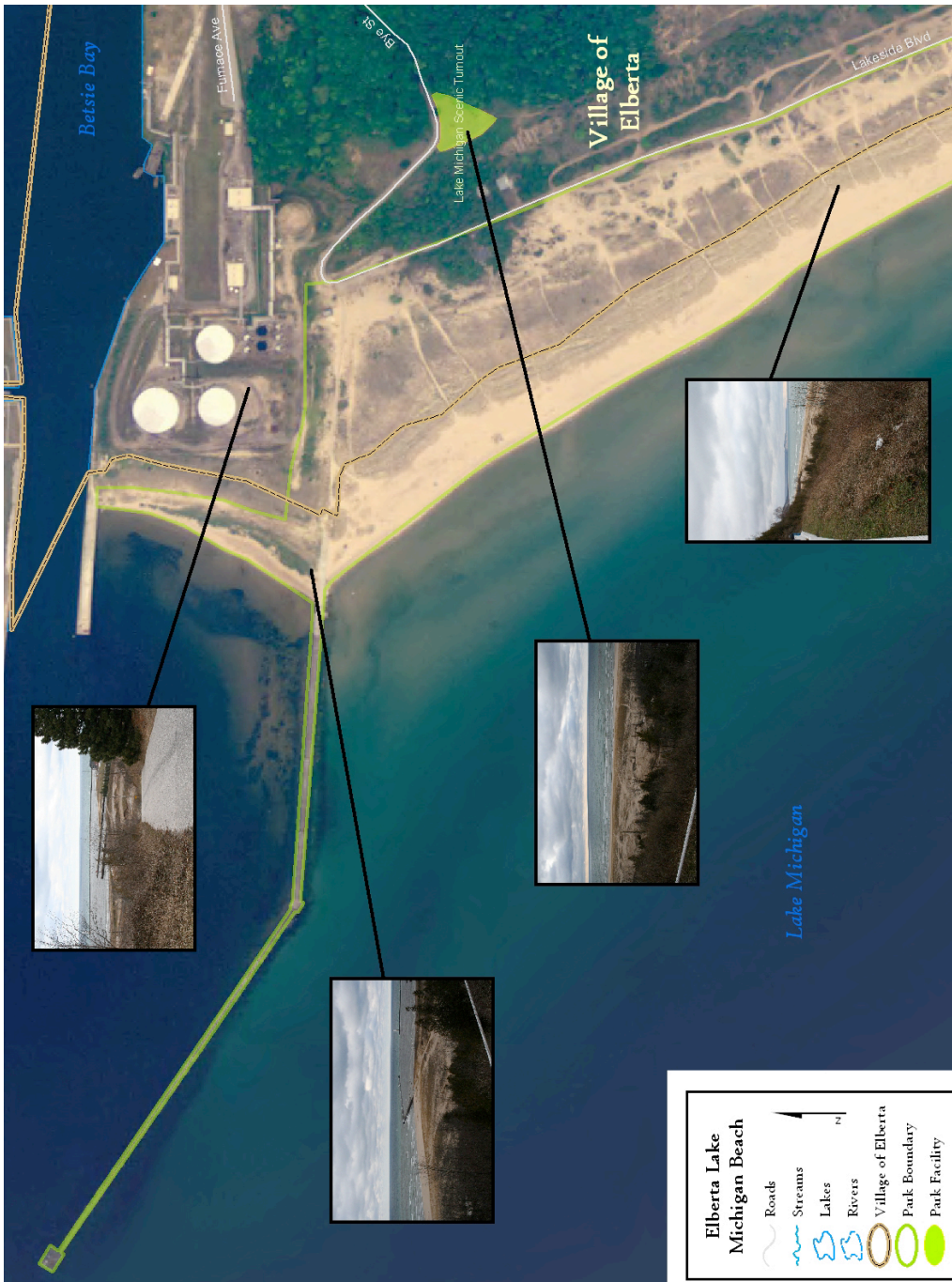
Elberta Lake Michigan Beach

Dudley Penfold Memorial Park

Public & Private Marinas and Neighborhood Playgrounds



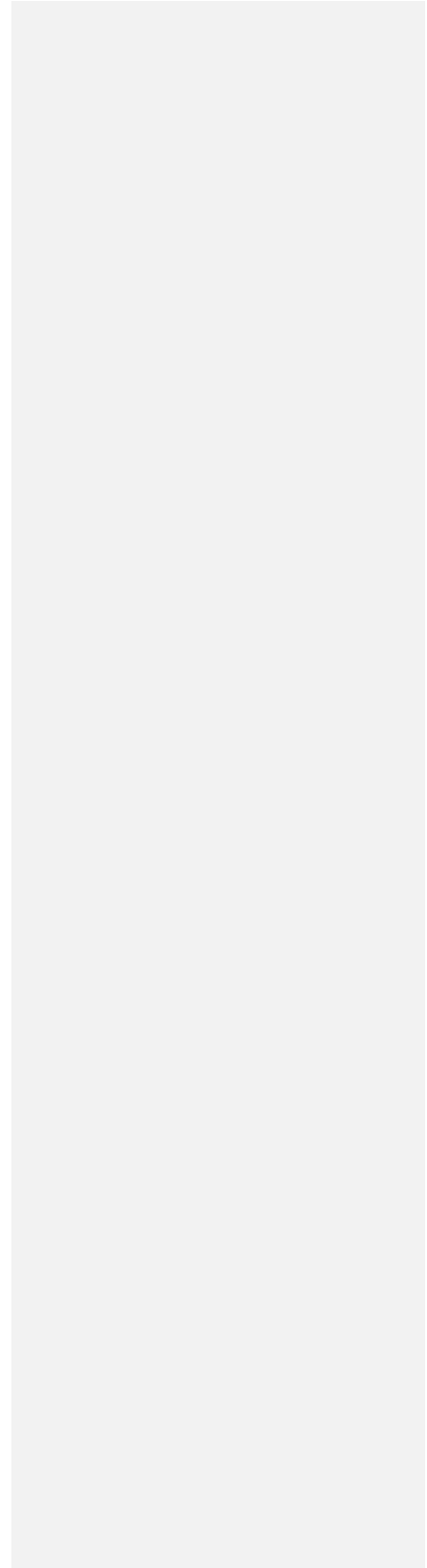


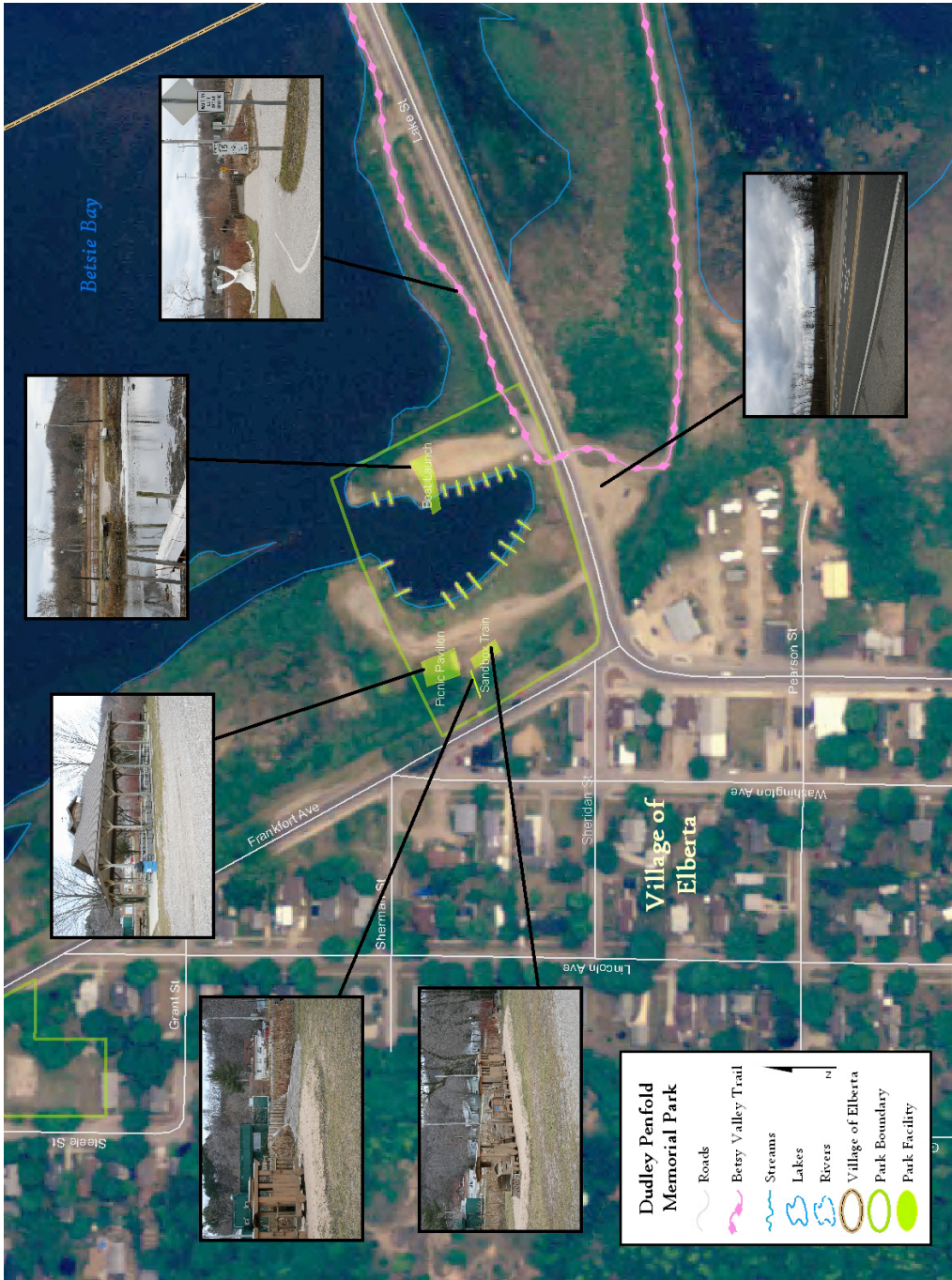


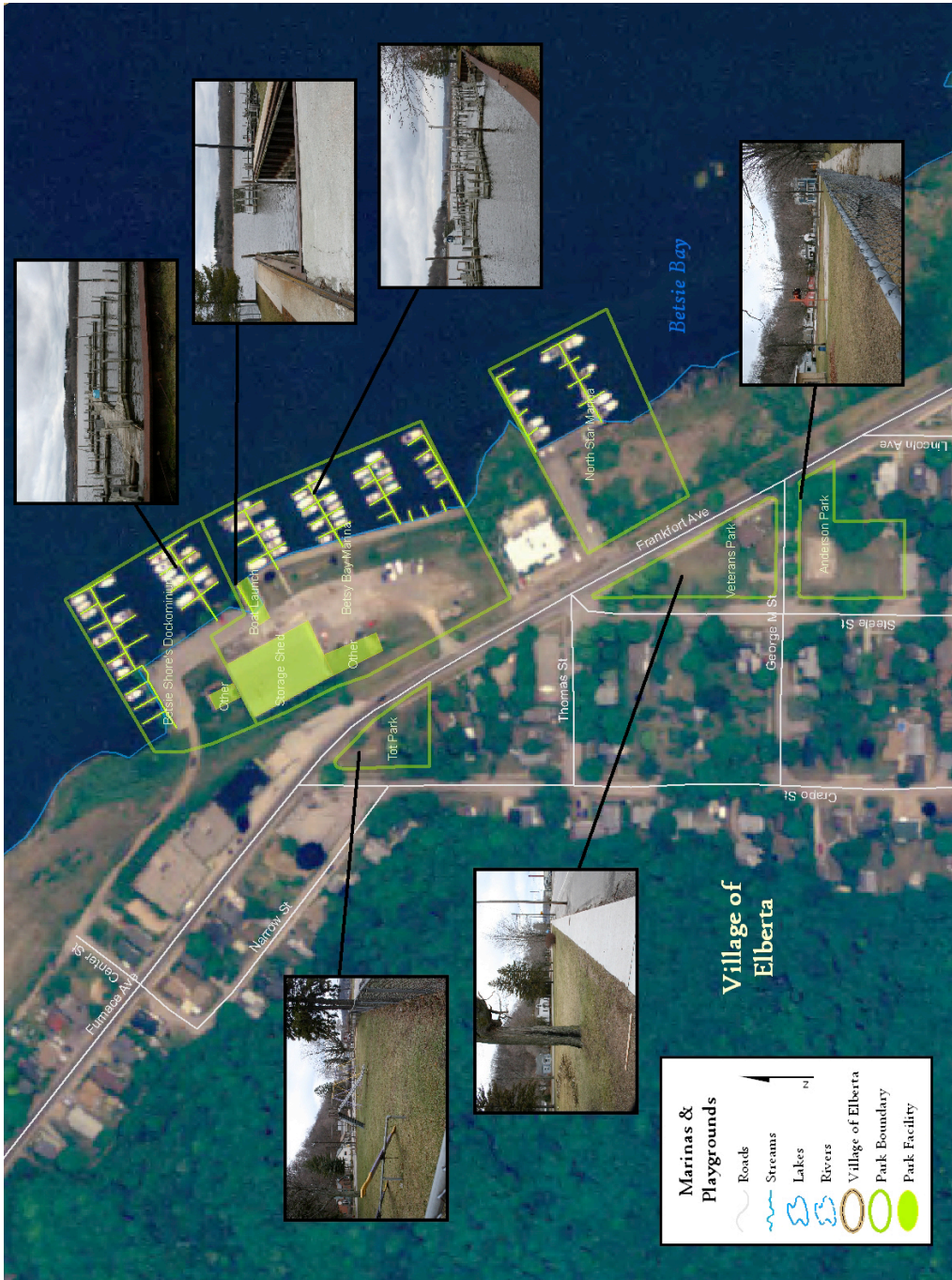
Village of Elberta

- 20 -

Recreation Plan







**Appendix B: Public Input Documentation**

Legal Notices for Public Input Workshop, Public Review and Comment Period, and Public Meeting Held

Copy of Public Input Survey distributed at February 13, 2008 Public Input Workshop

Summary of Responses Received from Public Input Workshop

Summary of Responses Received from Public Review and Comment Period

Copy of Minutes from Public Meeting held April 17, 2008

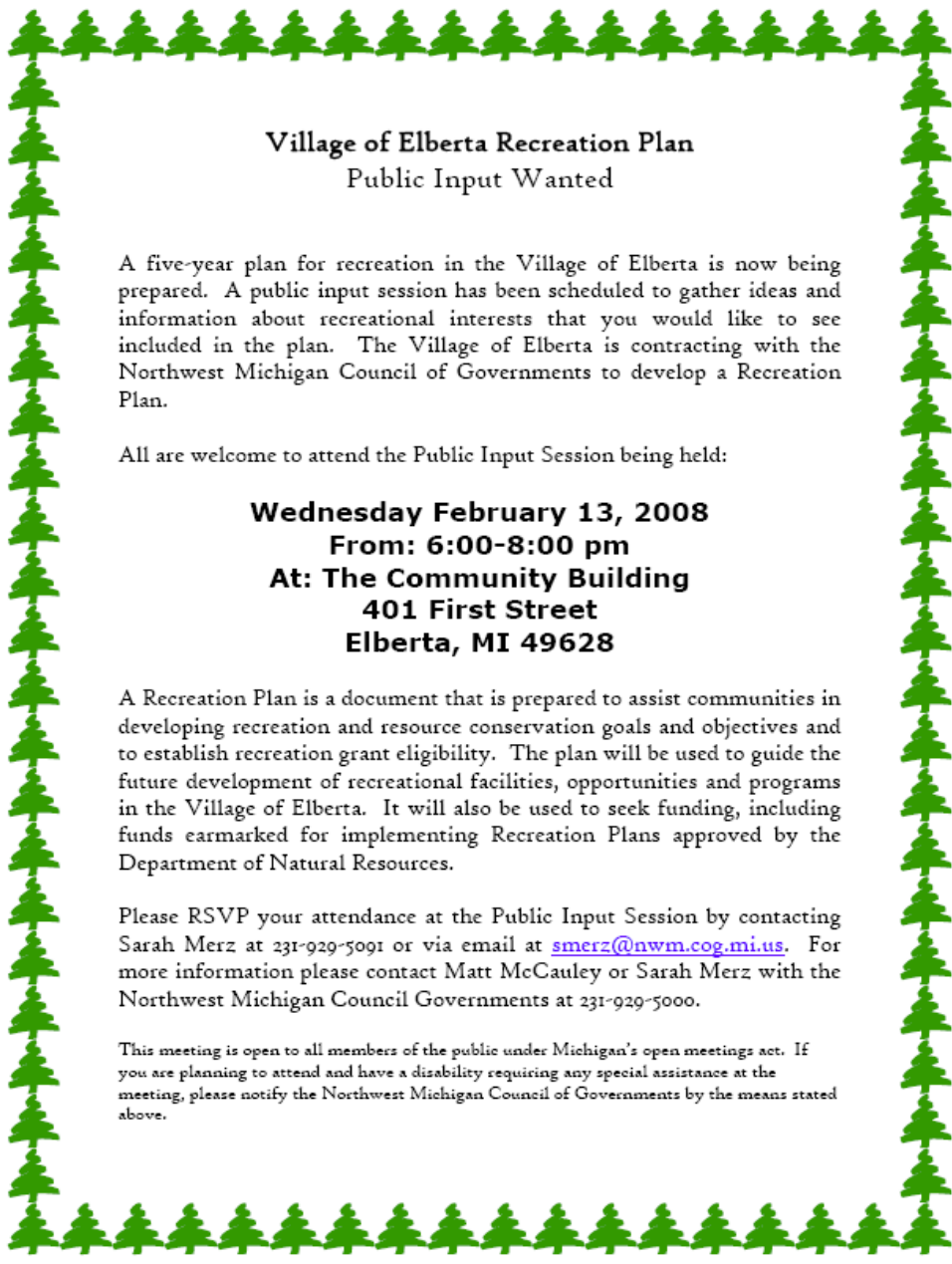
## Benzie County Record Patriot Legal Notices

### VILLAGE OF ELBERTA Recreation Plan Public Input Wanted

A five-year plan for recreation in the Village of Elberta is now being prepared. A public input session has been scheduled to gather ideas and information about recreational interests that you would like to see included in the plan. The Village of Elberta is contracting with the Northwest Michigan Council of Governments to develop a Recreation Plan. All are welcome to attend the Public Input Session being held:  
Wednesday February 13, 2008  
6:00-8:00 pm  
At: The Community Building  
401 First Street  
Elberta, MI 49628  
Please RSVP your attendance at the Public Input Session by contacting Sarah Merz at 231-929-5091 or via email at [smerz@nwm.cog.mi.us](mailto:smerz@nwm.cog.mi.us).  
This meeting is open to all members of the public under Michigan's open meetings act. If you are planning to attend and have a disability requiring any special assistance at the meeting, please notify the Northwest Michigan Council of Governments by the means stated above.

### VILLAGE OF ELBERTA Recreation Plan Public Input Wanted

A five-year recreation plan for the Village of Elberta is available for public review starting March 5, 2008. A copy of the plan will be available for reviewing at the Village of Elberta offices or online at [www.nwm.org](http://www.nwm.org). Please direct all comments or questions regarding the plan to the Northwest MI Council of Governments at the contact information below by April 9, 2008. At the end of the review period, comments will be compiled and incorporated into the plan. Public Comments will also be taken at the April 17, 2008 Village Council meeting before the plan is presented for adoption. The Village Council meeting will be held at The Community Building, 401 First Street, Elberta, MI 49628 at 7:00 pm. To request a hardcopy of the plan contact Sarah Merz at NWMCOG via phone at 231-929-5091 or via email at [smerz@nwm.cog.mi.us](mailto:smerz@nwm.cog.mi.us).



**Village of Elberta Recreation Plan**  
**Public Input Wanted**

A five-year plan for recreation in the Village of Elberta is now being prepared. A public input session has been scheduled to gather ideas and information about recreational interests that you would like to see included in the plan. The Village of Elberta is contracting with the Northwest Michigan Council of Governments to develop a Recreation Plan.

All are welcome to attend the Public Input Session being held:

**Wednesday February 13, 2008**  
**From: 6:00-8:00 pm**  
**At: The Community Building**  
**401 First Street**  
**Elberta, MI 49628**

A Recreation Plan is a document that is prepared to assist communities in developing recreation and resource conservation goals and objectives and to establish recreation grant eligibility. The plan will be used to guide the future development of recreational facilities, opportunities and programs in the Village of Elberta. It will also be used to seek funding, including funds earmarked for implementing Recreation Plans approved by the Department of Natural Resources.

Please RSVP your attendance at the Public Input Session by contacting Sarah Merz at 231-929-5091 or via email at [smerz@nwm.cog.mi.us](mailto:smerz@nwm.cog.mi.us). For more information please contact Matt McCauley or Sarah Merz with the Northwest Michigan Council Governments at 231-929-5000.

*This meeting is open to all members of the public under Michigan's open meetings act. If you are planning to attend and have a disability requiring any special assistance at the meeting, please notify the Northwest Michigan Council of Governments by the means stated above.*



### **Summary of Responses Received from Public Input Workshop**

Public Present: Mark Soule, Sylvester Lee, Charlie Hendershott, Reggie Manville, Sharyn Bower, Dave Neiger, Bonnie Ness, Doug Holmes, Karen Roberts, and Chris Sullivan

Most of the comments and input received were in the form of illustrations drawn on large maps. These were incorporated into the maps that are included in the recreation plan and within the text body of the recreation plan. In general, the public wanted to see a completion of the Beach-to-Beach Trail, improvements in parking and accessibility at current recreation facilities, and provide continued upkeep and maintenance for the current recreation facilities.

### **Summary of Responses Received from Public Review and Comment Period**

Public Comment Received From: Chris Sullivan, Rebecca Clapp, and Shauna Fite

Chris Sullivan commented on his support of having the acquisition of the Elberta Dunes property listed as the first objective for the recreation plan. His comments also included some suggested added wording to the text body under this objective.

Rebecca Clapp and Shauna Fite commented on their concerns for the Elberta Lake Michigan Beach and if there are plans to develop its infrastructure beyond what is stated in the plan.

## Copy of Public Meeting Minutes

Sarah Merz

---

From: Sharyn Bower [bower@villageofelberta.org]  
Sent: Wednesday, April 23, 2008 9:55 AM  
To: Sarah Merz

A public hearing and regular meeting of the Elberta Village Council was held at the Community Building, Thursday, April 17, 2008.

Present: D.Holmes, Bower, D.Bower, Burks, Ness, Hendershott, and K.Holmes.

Absent: R.Manville

Guests: Carolee Ness, Ruth Nanni, Edna Beechraft. See attached for additional names.

### APPROVAL OF MINUTES:

Motion by D.Bower supported by Burks to approve the minutes of the regular meeting of March 20, 2008. Yeas - 6.

### APPROVAL OF AGENDA:

Motion by Ness supported by Hendershott to approve the agenda as proposed. Yeas - 6.

Brief Public Comment on Agenda Items: Shawna Fite introduced herself and said she was speaking for the Elberta Beach Coalition.

She said that her group had concerns with the Recreation Plan. Fite said their main concern was the blocking of the public access to the beach. She said that her group would like to have input into the current plan and all future plans for the beach. Fite asked the Council if they could present their input at this time. D.Holmes said that her group could have public input once the public hearing was opened.

Motion by Hendershott supported by Burks to leave the regular meeting and go into the advertized public hearing. Yeas - 6.

Fite outlined the concerns of the Elberta Beach Coalition (EBC) regarding the beach and its access. Her group questioned why the Village felt they had to place large mounds of sand at the road end and along the dunes. The sand placement is prohibitive for accessing the beach and parking along the dune area. D.Holmes said the mounds had been placed in those locales to try and deter people from driving on the beach and its surroundings. K.Holmes pointed out that the property in question is all part of the critical dunes. The Council said they would like to have nice facilities at the beach and are attempting to do so through grants. They noted that in the past there has been much vandalism at the beach. Members of the EBC asked about the Sheriff's Department patrolling the beach area. Council members said that the Sheriff's Department doesn't like to go down to the

beach area. E.VanDussen asked why the DPW had the authority to block the access. D.Holmes said that he as Village President had authorized the DPW to put up the berms. VanDussen said that he thought that should have been a vote of the Council. The Council told him that the Village President is authorized to give direction to the DPW and that it isn't necessary to have a vote of the Council for all DPW activities. VanDussen also questioned the legality of removing sand from the dune to block the access. He asked if the DEQ had given their permission. The Council told him that Sand Products, who are owners of the surrounding dunes area were happy that the Village was trying to prevent further damage to the dunes and beach. Carl Noffsinger said that the kids (EBC) want to have a plan. He said he thought the Village was wrong in blocking off the beach. Noffsinger said people had been accessing the beach from that area for years. The EBC asked about adopting an ordinance with a sizable fine that would prohibit driving on the beach and dunes area. The council will look into creating an ordinance with a sizable fine to try to deter

the beach drivers. They will check with their attorney. It was suggested that the Council and the EBC sit down together and pound out a plan that will work for everyone. The EBC said that were other solutions that would work for the beach problems. D.Holmes said their group would need to work with their peers and try to stop the vandalism and misuse of the beach and its surrounding area. The Village would like to work with the EBC and feels that this is a starting point. D.Holmes said that the piles of sand will be removed but will depend on the group for their monitoring of the area. He warned that it wouldn't happen all at once but it would happen. VanDussen asked the Council if they had permission from the DEQ to remove the sand from the access sites. Beechraft suggested the EBC contact the DNR and the DEQ. The Council said they had no problem with their contacting the DNR and the DEQ as they didn't feel that either of those organizations would be happy with what has happened to the beach and its vegetation from all of the misuse. The EBC will contact the Village Clerk to set up a date when they are ready and have a plan worked out.

Another question raised was about the closing of the road to the beach from the scenic outlook. D.Holmes said the road was being considered for closing but only if there was another public access. The public access being considered was through the development, around the bottom of the hill. The EBC asked if a road through a condominium project would be awkward. D.Holmes said that if and when there is a road through the project it would be on the outside edge and not through the middle of the development. The EBC asked why couldn't they also leave the hill road open. D.Holmes said that it is hoped that the hill road could be terraced and have outlooks and picnic areas and a walkway down the hill. He noted that any such plans are in the early stages. Beechraft asked about the abandoned road at the bottom of the hill. Gest said that a title search on the property had not showed any road. Noffsinger said that a street needs to go through a process to be abandoned. He said that the beach road had been abandoned during Blacklock's tenure in an arrangement with the railroad company that was in business at that time.

D.Holmes said that EBC was also concerned about M-168. Fite said that she

had meant Lakeside BLVD. Noffsinger said that M-168 will be completely renovated and redesigned with Federal funds. The start date is tentative but the earliest could be in 2010. D.Holmes was asked if the Village would be taking over the street once the work is completed. He said he was unsure as it would be a considerable liability with all of the future maintenance, etc.

Beechcraft asked about restrooms at the beach. D.Holmes said new restrooms were in the plans. There would be portalets. They would have to be screened due to the high winds in the area. Beechcraft asked why the Village couldn't hire someone to police the property.

Carl Noffsinger said that he wanted to go on record as being appalled that the last flat piece of property in the Village was going into the conservancy. D.Holmes said he thought most of the Council felt that way but unfortunately it was out of their hands. The Village didn't have the financial ability to fight it. It was discussed that in the past the conservancy had sold portions of their property. D.Holmes said that was one of the reasons that the Village had partnered with the conservancy was so they could have control. The property will be deeded over to the Village once it's purchased. Beechcraft and D.Holmes discussed the future of the Thorpe property.

Sara Merz discussed several changes to the recreation plan. Noffsinger said that the Tot Park was never named the Keillor Memorial Park.

Casey Johnson asked if there was going to be a Solstice Festival this year. He was told there would be a Solstice Festival.

Motion by Hendershott supported by Ness to go out of the public hearing and return to the regular meeting. Yeas - 6.

APPROVAL OF BILLS: Motion by Burks supported by D.Bower to approve the bills for March 1 to March 31 in the amount of \$25,758.49. Yeas - 6.

Superintendent's Report: Hoogerhyde said that he has talked to several companies about putting in a bid on street repairs/resurfacing. He also said that the DPW will start putting out the boardwalk on the beach on Monday. Hoogerhyde said he will also start moving/removing the sand at that time. He said they will also remove the dead deer on the beach. Motion by Hendershott supported by Burks to accept the Super's report. Yeas -6.

Water/Sewer: K.Holmes reported on BLUA project. He said the project is projected to be finished in 30 days. K.Holmes also said the new sewer project has saved over 400,000 gallons of material going to BLUA per month. He discussed the possibility that sump pumps are being used in the Village.

Zoning Administrator: Noffsinger reported on several zoning issues in the Village.

Committees:

M-168: Noffsinger said that both of the M-168 and Grace Road Projects have been moved back on the roster.

Planning: Burks said that the Planning Commission is working with the developer on some zoning issues concerning the development of the waterfront area.

AGENDA:

1. D/A New Village Recreation Plan - NWMCOG. The Council felt that the proposed recreation plan addressed both current plans and future plans. It was noted that the plan could be amended in the future if necessary. Motion by Burks supported by Hendershott to approve the new Village of Elberta Recreation Plan with the proposed changes. Yeas - 6.

2. D/A DNR Trust Fund Grant Application - Resolution. D.Holmes said the resolution was a necessary part of the grant application. Motion by Burks supported by Ness to adopt the resolution of support for submitting a grant application to the MDNR Trust Fund. Yeas - 6. The resolution in its entirety will become a permanent record in the Village Minutes Book.

3. D/A Annual Appointments. Motion by Ness supported by D.Bower to appoint for fiscal year 2008/09 the same appointees as were appointed in 2007/08. Yeas - 6. The appointees are as follows: President ProTem - K.Holmes; Deputy Clerk - L.Manville; Deputy Treasurer - S.Bower; Department Heads: Water & Sewer - K.Holmes; Parks & Rec - R.Manville; Marina & Dockos - Hendershott; Beach - R.Manville; Zoning - Noffsinger; 3<sup>rd</sup> Party Liaison - D.Holmes; Management & Policy - D.Holmes; EDC - K.Holmes; Committees: Trees - Hendershott, Kirbach, B.Noffsinger, L.Manville; Budget - L.Manville, S.Bower, D.Holmes, Hendershott; Fire & Safety - D.Holmes, Hendershott; M-168 - D.Holmes, Noffsinger, Burks, Mills, Gest, Jones; Library Building - R.Manville, D.Bower, K.Holmes, Burks; Boards: Planning Commission - Kirbach, Burks, Kibby-Crawford, Mix, Lovegrove; BLUA - Hendershott - 2010 (K.Holmes - 2009); Brownfield - R.Manville - 10-21-11, Gest - 10-21-11, L.Manville - 10-21-10, M.Jones - 10-21-10, Vacancy 1 year term; Dockos - D.Holmes, Noffsinger, Gest, Hendershott; BV Trail - Gest;

F/E Chamber of Commerce - M.Jones. Yeas - 6.

Public Comment:

Edna Beechraft: Beechraft asked about the appointments. She was told they are the same as last year. Beechraft asked what kind of appointments were they. D.Holmes said that K.Holmes was appointed President ProTem. He said that Bower was appointed Deputy Treasurer and L.Manville was appointed Deputy Clerk. D.Holmes said that the various department heads, committees, boards, etc. that were chosen were the same as appointed last year.

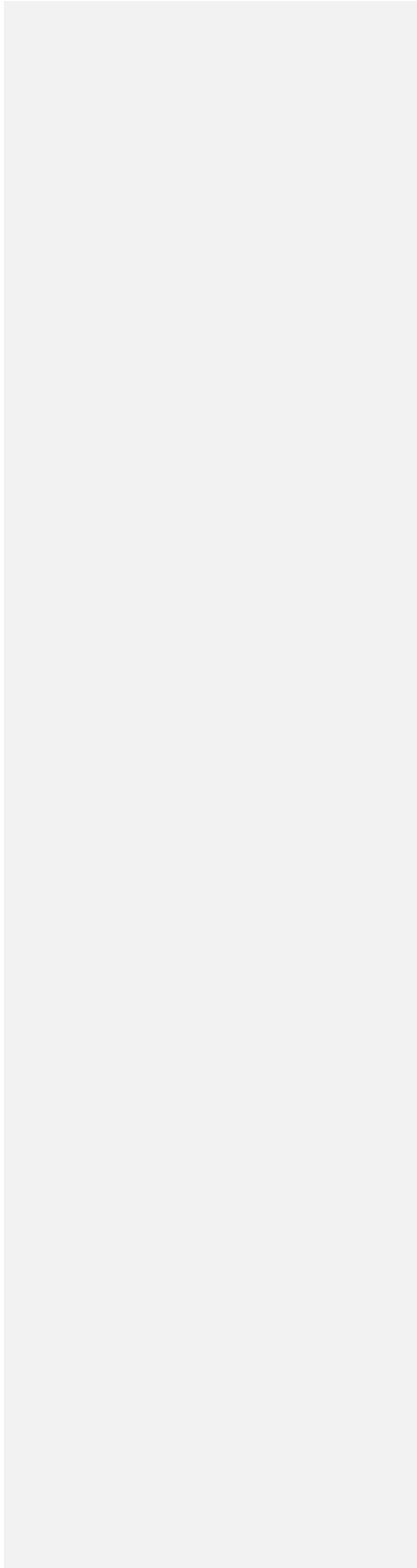
Beechraft also inquired about the status of the development. Gest said that they were turned down by the DEQ for their marina permit. He said

that they will contest the decision.

Shawna Fite, representing EBC, thanked the Council for their help with the beach.

Motion to adjourn was accepted.

Sharyn Bower, Village Clerk

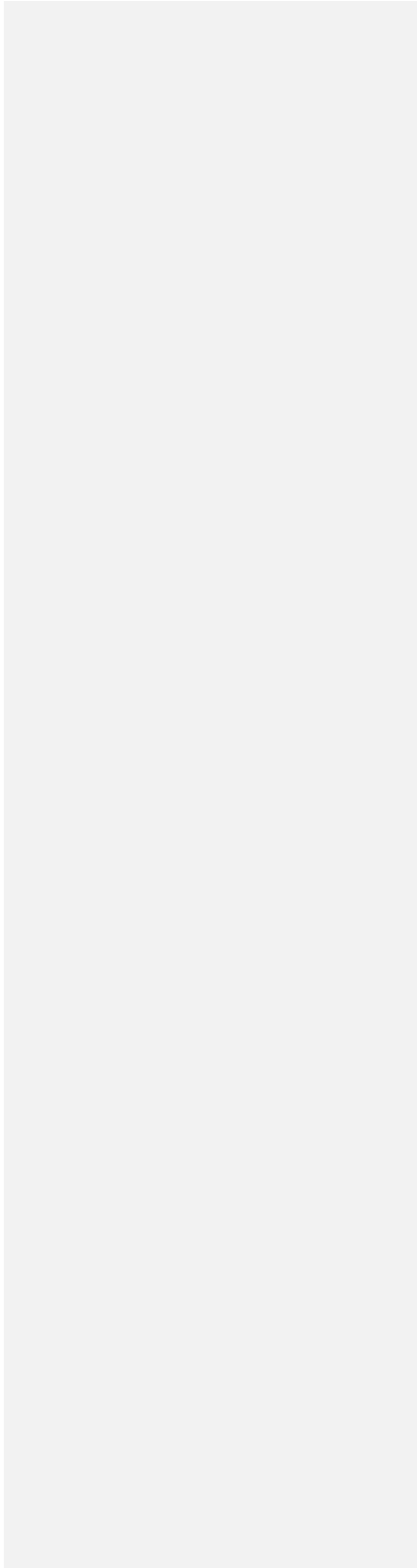


**Appendix C: Approval Documentation**

Official Resolution of Adoption by the Village of Elberta Council

Copy of letter transmitting adopted plan to the Benzie County Planning Department

Copy of letter transmitting adopted plan to the Northwest Michigan Council of Governments



VILLAGE OF ELBERTA  
Recreation Plan  
Resolution of Adoption  
COUNCIL of the VILLAGE OF ELBERTA

WHEREAS, the VILLAGE OF ELBERTA has undertaken a Fiver Year Parks and Recreation Plan which describes the physical features, existing recreation facilities and the desired actions to be taken to improve and maintain recreation facilities during the period between 2008 and 2013, and

WHEREAS, a public comment session was held April 17, 2008 at The Community Building to provide an opportunity for citizens to express opinions, ask questions, and discuss all aspects of the Recreation Plan, and

WHEREAS, the VILLAGE OF ELBERTA has developed the plan for the benefit of the entire community and to adopt the plan as a document to assist in meeting the recreation needs of the community, and

WHEREAS, after the public meeting, the VILLAGE COUNCIL voted to adopt said Recreation Plan.

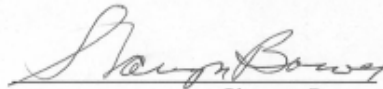
NOW, THEREFORE BE IT RESOLVED the VILLAGE OF ELBERTA COUNCIL hereby adopts the VILLAGE OF ELBERTA Recreation Plan as a guideline for improving recreation for the residents of the VILLAGE OF ELBERTA.

Yeas: *D. Holmes, D. Bower, Barks, Hess, Henderskott*  
*K. Holmes*

Nays: *0*

Absent: *Manvillee*

I, *Sharyn Bower*, VILLAGE Clerk, do hereby certify that the foregoing is a true and original copy of a resolution adopted by the VILLAGE COUNCIL at a Regular Meeting held on the 17<sup>th</sup> day of April, 2008.

  
Sharyn Bower  
Village Clerk